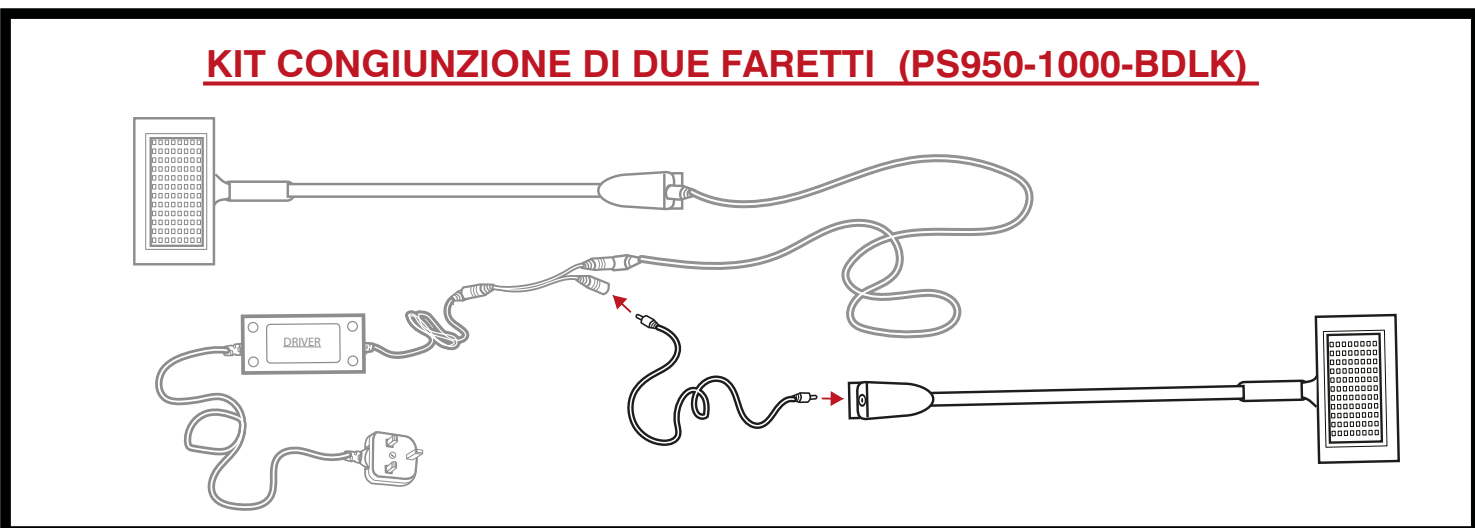
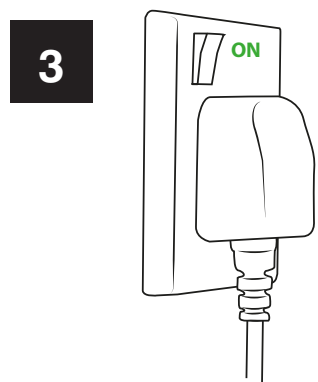
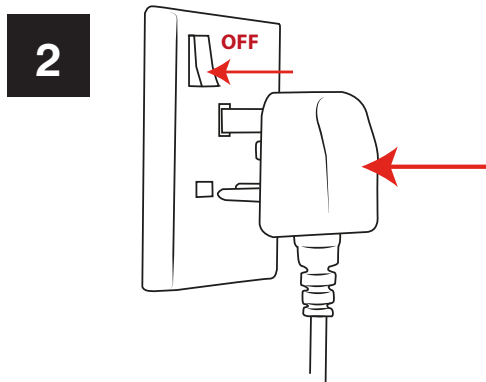
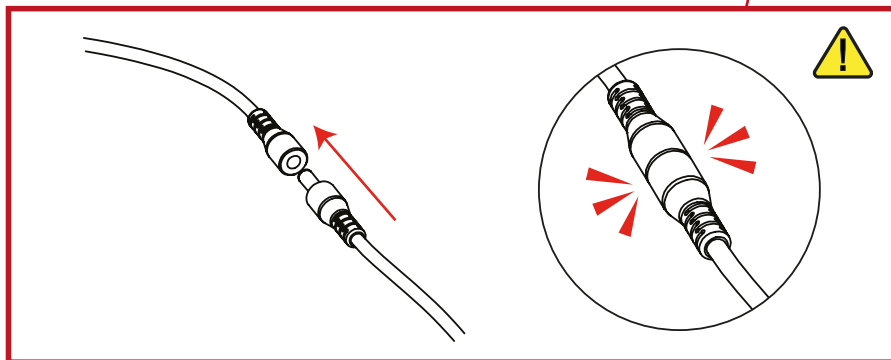
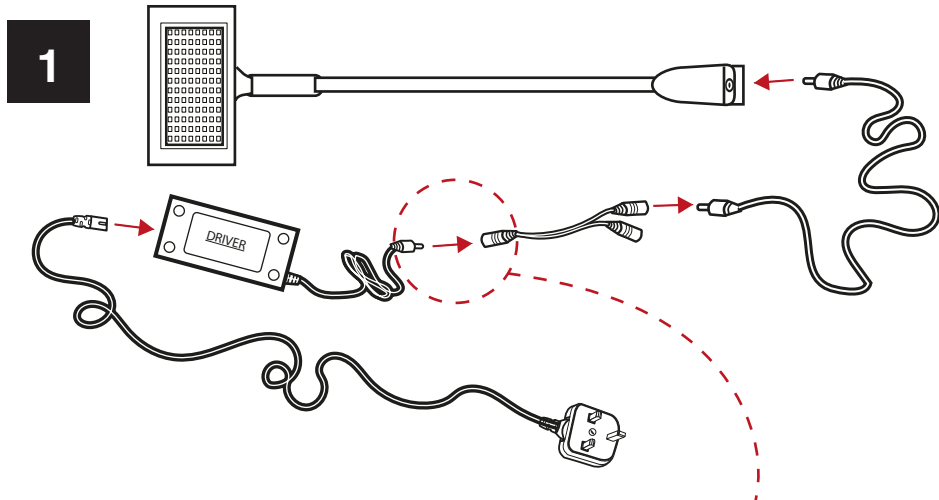
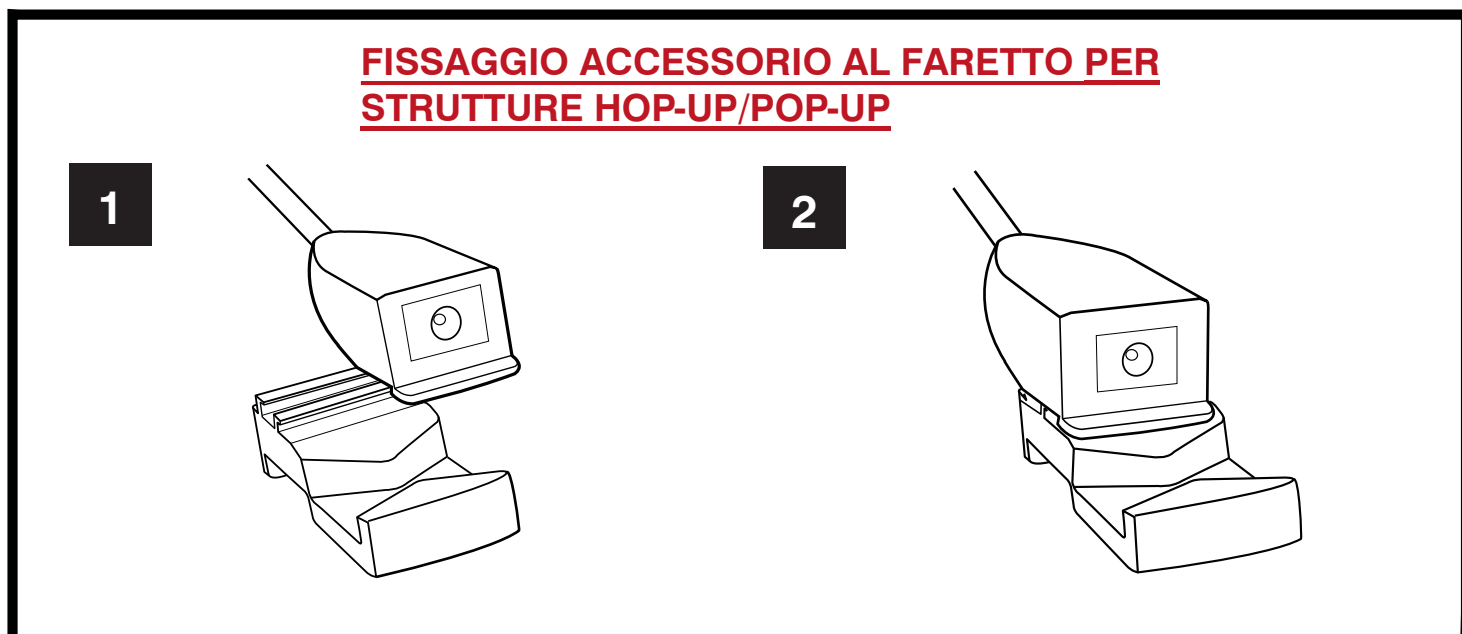
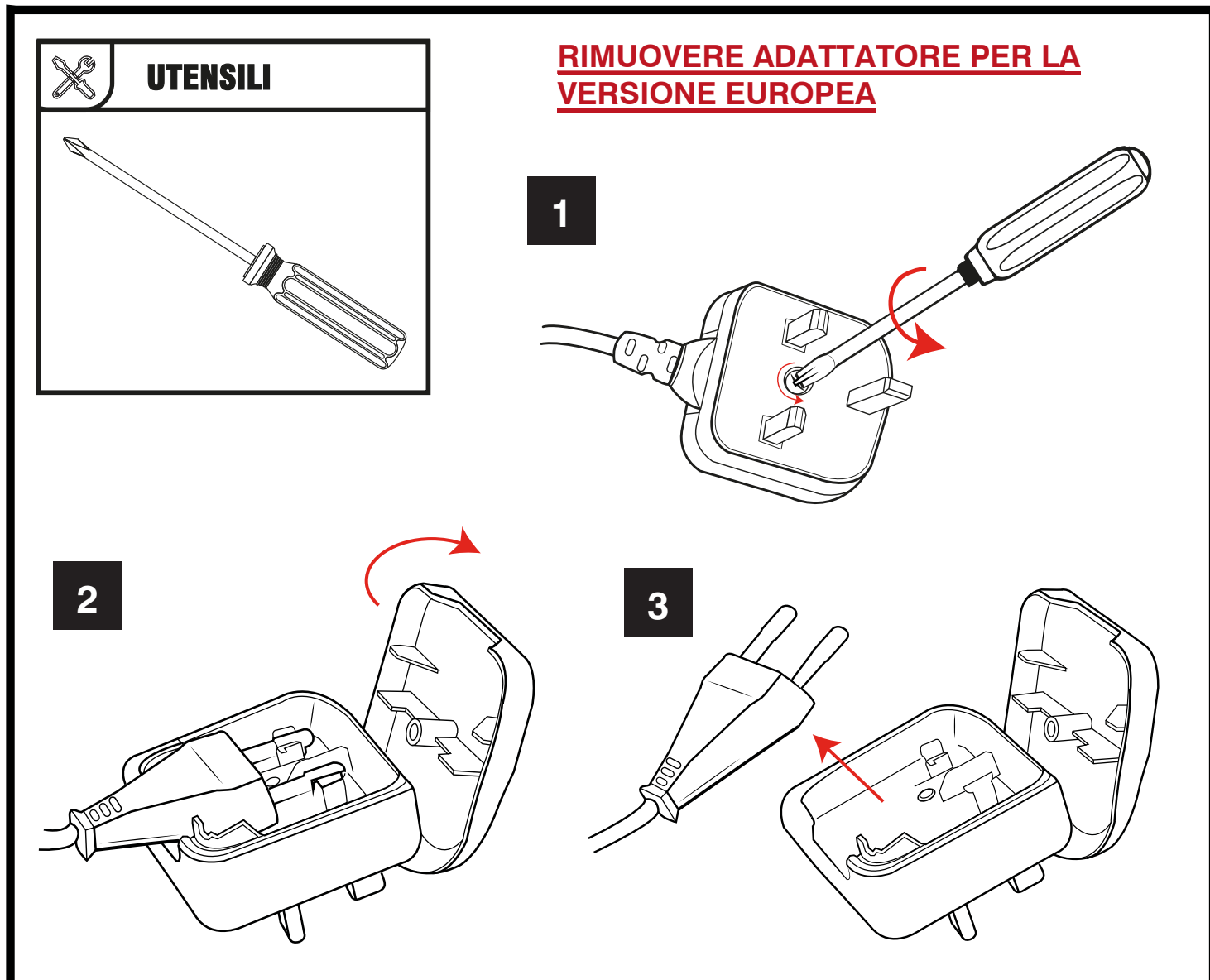


ATTENZIONE

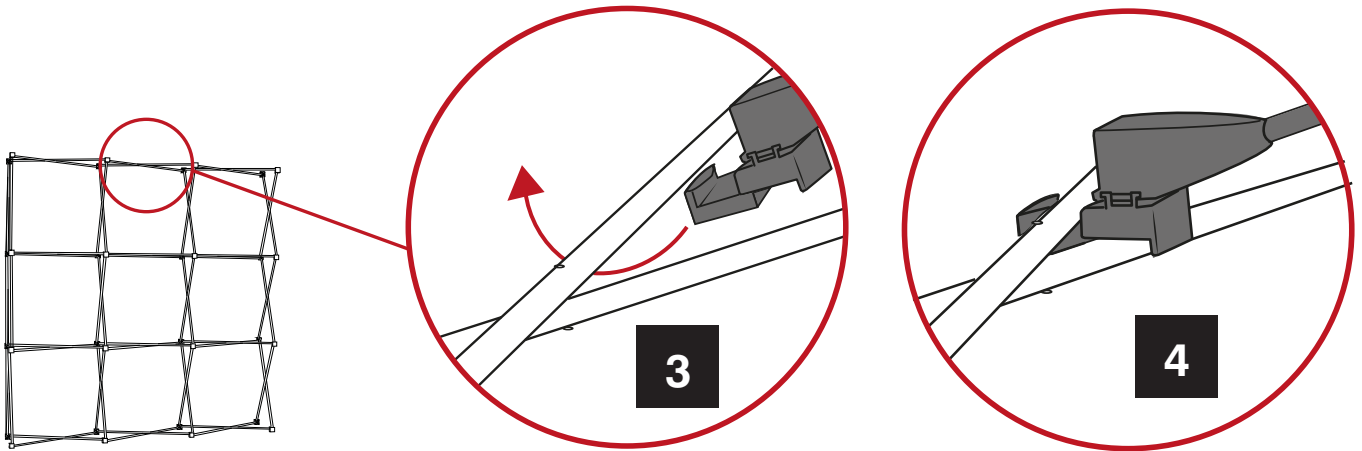
- Assicurarsi che tutti i collegamenti siano corretti e sicuri prima di inserire la spina. In caso contrario, si potrebbero danneggiare i LED
- Scollegare sempre l'alimentazione prima di scollegare i farette
- Non toccare la superficie del LED potrebbe verificarsi un riscaldamento localizzato







INSTALLAZIONE SULLA STRUTTURA HOP-UP/POP-UP



FISSAGGIO A STRUTTURA VECTOR

